

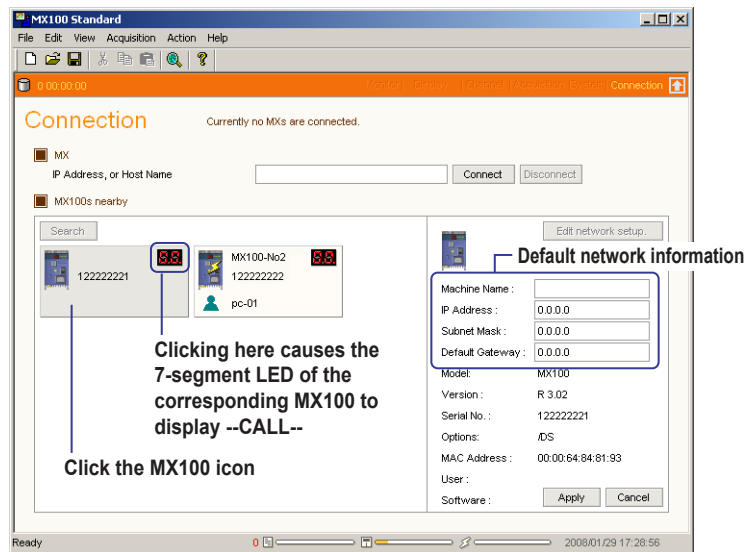
Please make the following alterations to the User's Manual IM MX180-01E (see underlined text).

■ Page i “Notes”

- This manual describes the MX100 Standard Software, release number “R3.02.” You can check the release number by choosing About from the Help menu of the Standard Software.

■ Page 2-2 “Connecting to an MX100 That Has Not Been Configured for the Network”

The default IP address and subnet mask values in step 3 and step 6 have been changed as in the figure below.



Click the Edit Network setup button to change the display to input boxes